

## VDI shank

**Type TRS** – centrepoint 60°

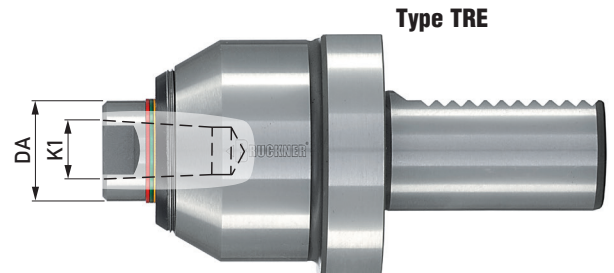
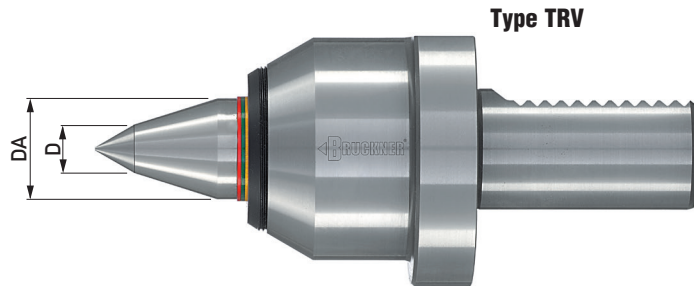
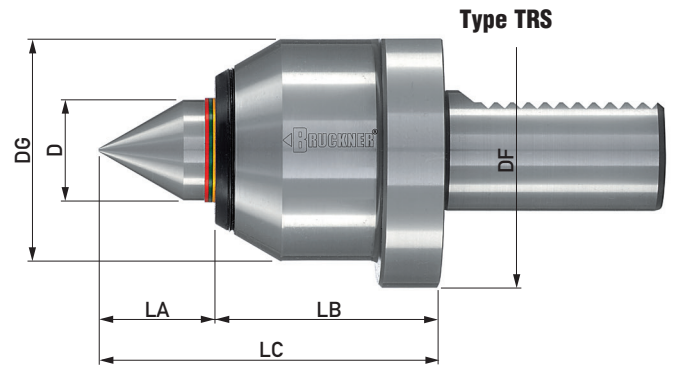
**Type TRV** – centrepoint 60°/40° extended

**Type TRE** – centre spindle with 1:7.5 internal taper for interchangeable inserts (page 43)

### Runout

max. 0.005 mm, with test report

max. 0.003 mm, high precision design on request



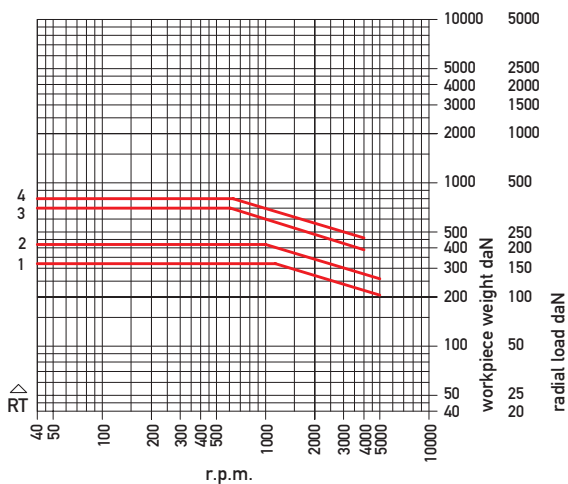
Type	TRS	TRV	TRE	TRS	TRV	TRE
ID. No.	700S 055VDI30	700V 055VDI30	700E 055VDI30	700S 068VDI40	700V 068VDI40	700E 068VDI40
Shaft size VDI	30	30	30	40	40	40
DG	55	55	55	68	68	68
DA	-	25	25	-	35	35
D	25	12	-	35	14	-
DF	68	68	68	83	83	83
K1	-	-	15	-	-	22
LA	28	37	13	40	49	21
LB	56	56	56	68	68	68
LC	84	93	69	108	117	89
Workpiece weight max. daN*	420	320	**	800	700	**
Spring travel	2.7	2.7	2.7	4.2	4.2	4.2
r.p.m. max.*	5000	5000	5000	4000	4000	4000
Radial/axial load graph	RT2/AT1	RT1/AT1	**	RT4/AT2	RT3/AT2	**
Suitable inserts	-	-	484..	-	-	487..

\*The radial load of type TRE is limited by the interchangeable inserts

\*observe the load graphs

Radial and axial loads for a bearing life of 2000 operating hours

**Radial – Types TRS/TRV VDI**



**Axial – Types TRS/TRV VDI**

